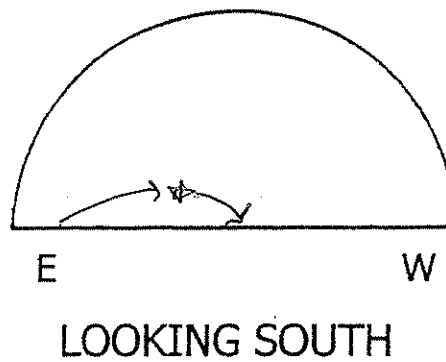
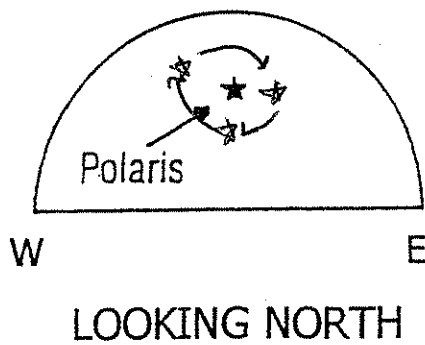
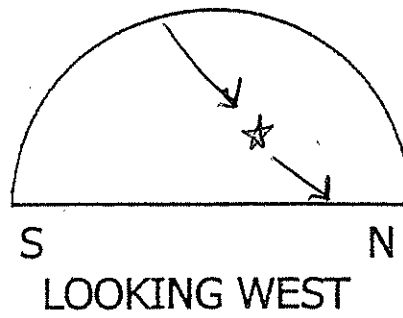
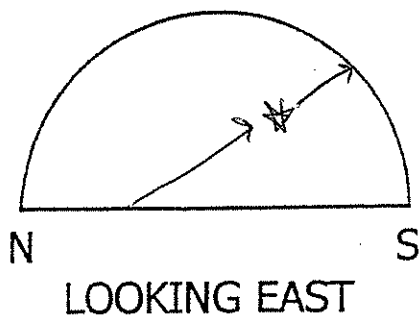
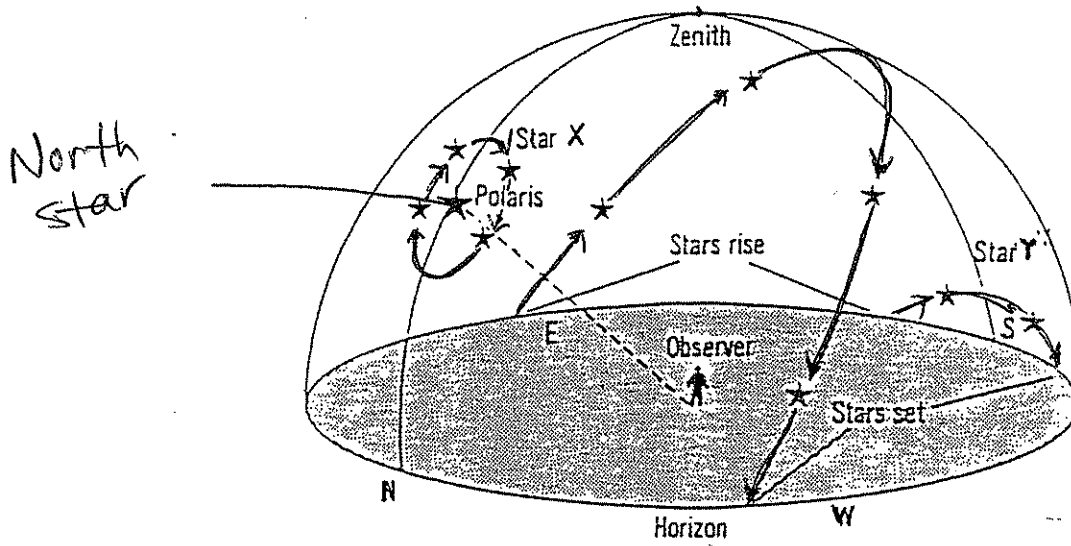


3. _____

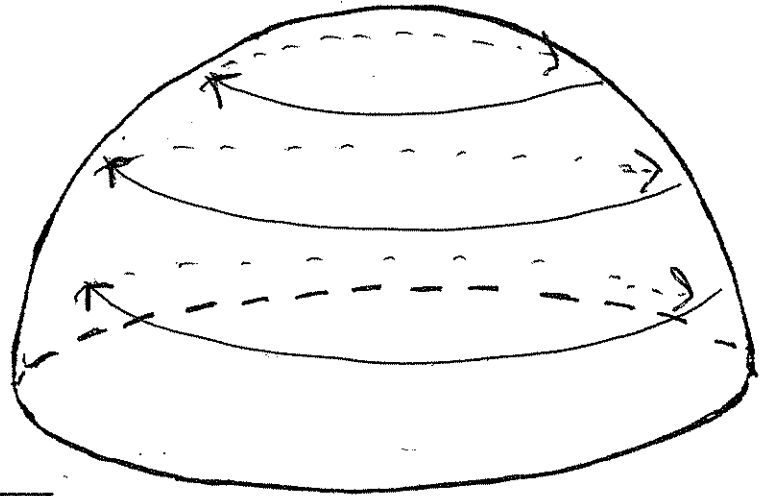


- b. The apparent daily motion of celestial objects (like stars) changes when the observer's location on Earth changes.

No stars
Rise / Set

90° N

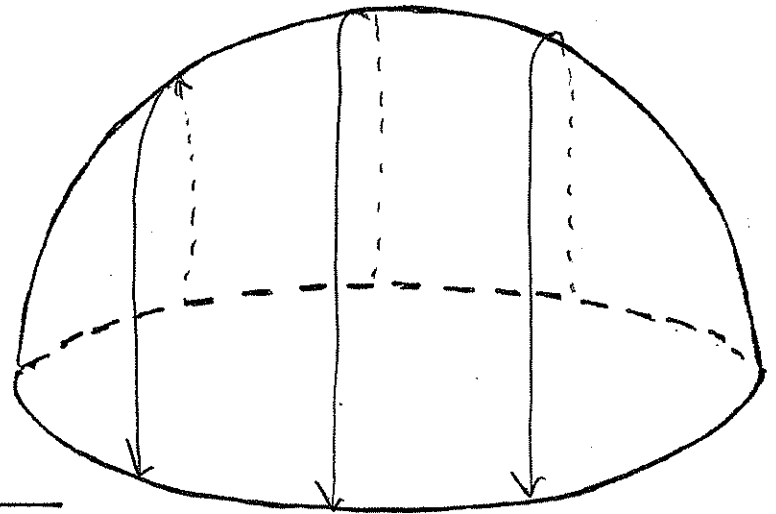
North Pole



All stars Rise
and Set

0°

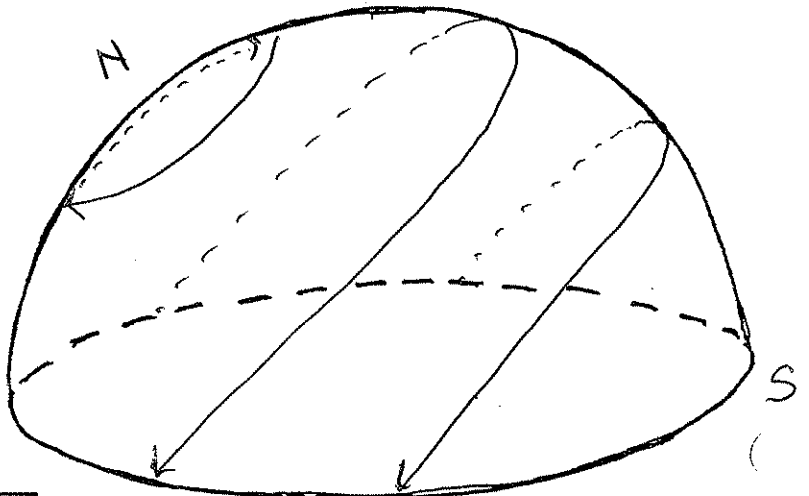
Equator



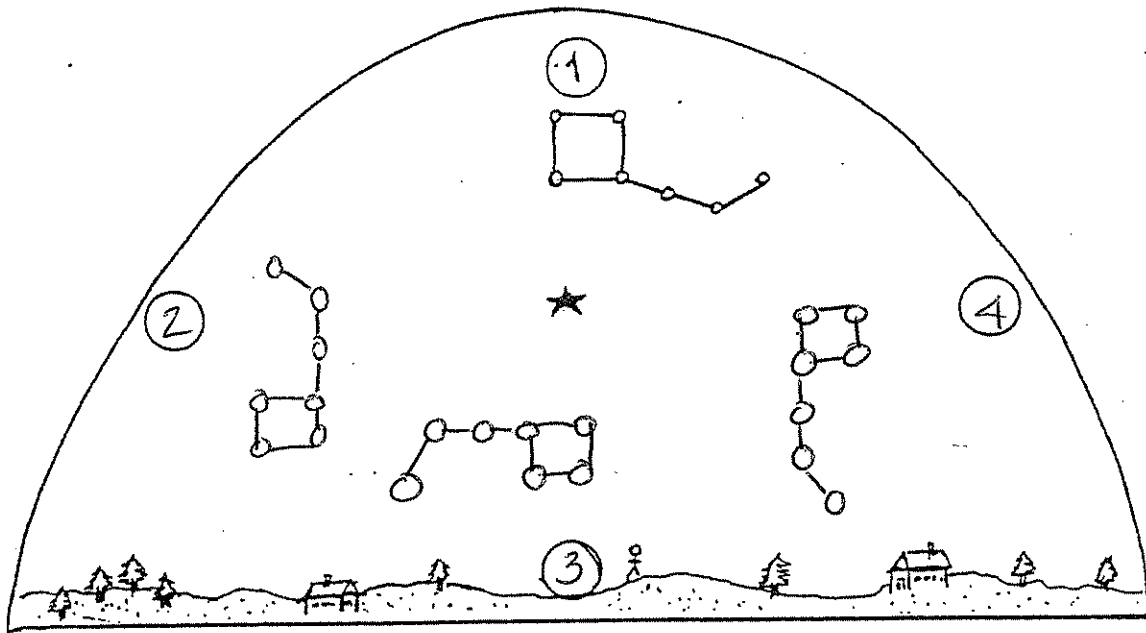
Mix

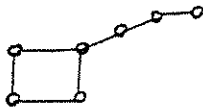
43° N

Ithaca

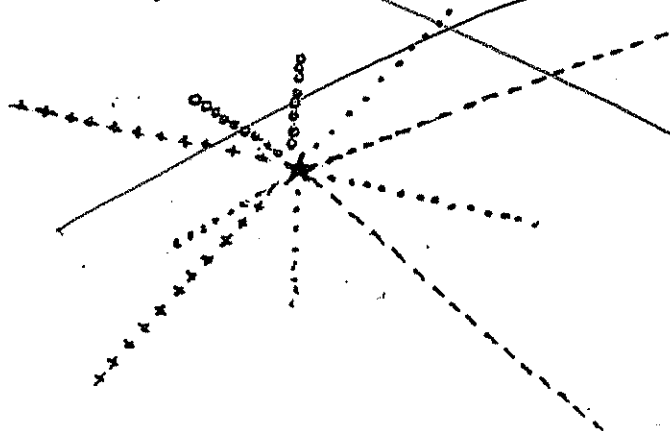


- c. The apparent daily motion of the Big Dipper, a Circumpolar constellation.



LOCATION OF OBSERVER	NYS	
DATE	mid-October	
POSITION OF THE BIG DIPPER 	9:00 pm	3
	3:00 am	4
	9:00 am	1
	3:00 pm	2

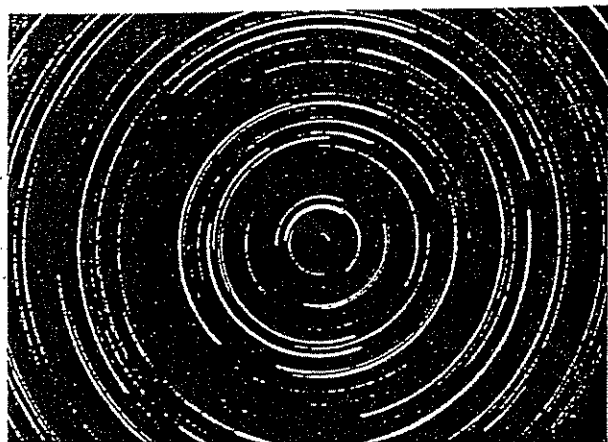
- d. Star trails - a time-exposed photographic image that shows the apparent motion of stars; it appears as a blurry line across the film.



Time exposure
2 hours

Angular distance
of star trails

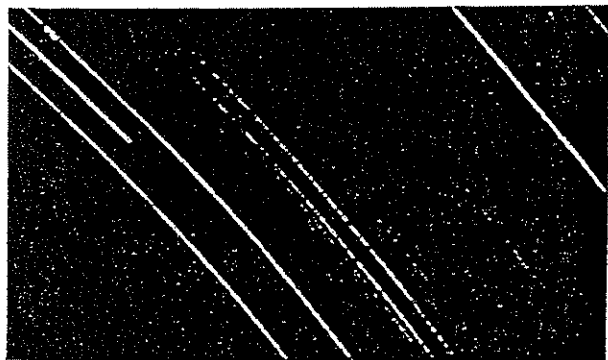
Star trail photographs looking north, south, east and west.



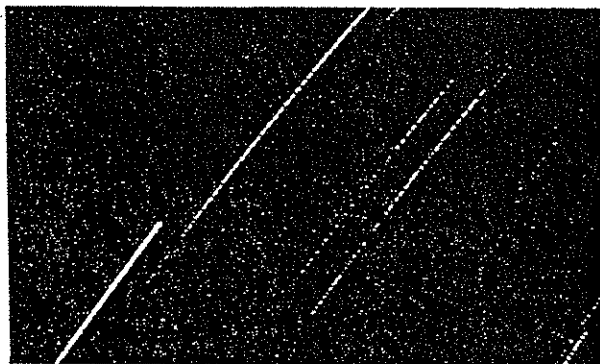
A. North



B. South



C. West



D. East

IV. The Solar System -

A. Main components/members of the solar system: