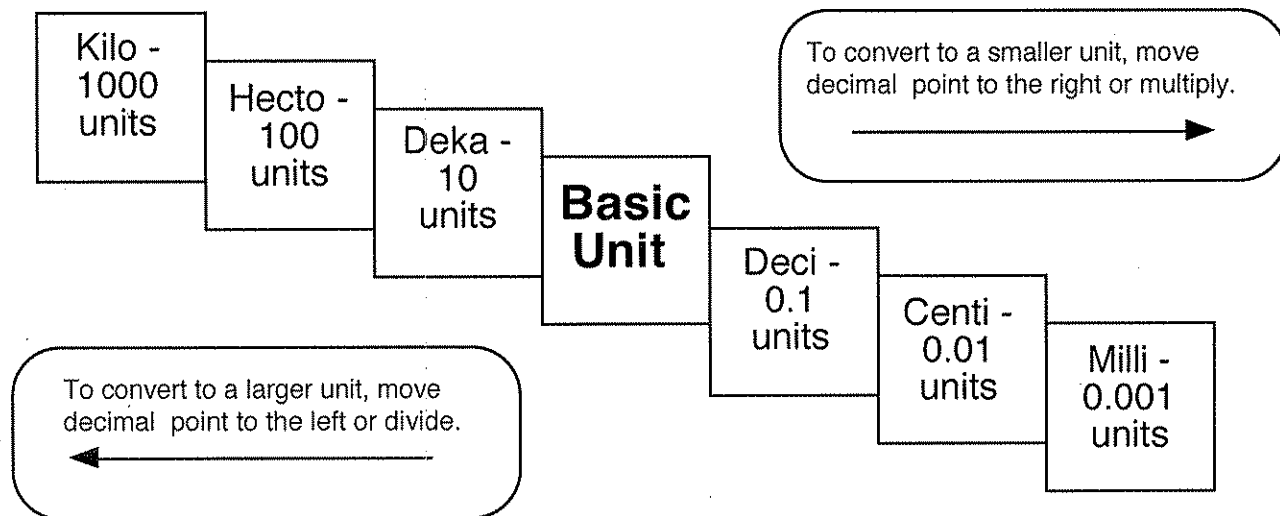


# Metric Mania

## Conversion Practice

Overhead Copy



Try these conversions, using the ladder method.

$$1000 \text{ mg} = \underline{\hspace{2cm}} \text{ g}$$

$$1 \text{ L} = \underline{\hspace{2cm}} \text{ mL}$$

$$160 \text{ cm} = \underline{\hspace{2cm}} \text{ mm}$$

$$14 \text{ km} = \underline{\hspace{2cm}} \text{ m}$$

$$109 \text{ g} = \underline{\hspace{2cm}} \text{ kg}$$

$$250 \text{ m} = \underline{\hspace{2cm}} \text{ km}$$

Compare using  $<$ ,  $>$ , or  $=$ .

$$56 \text{ cm} \bigcirc 6 \text{ m}$$

$$7 \text{ g} \bigcirc 698 \text{ mg}$$