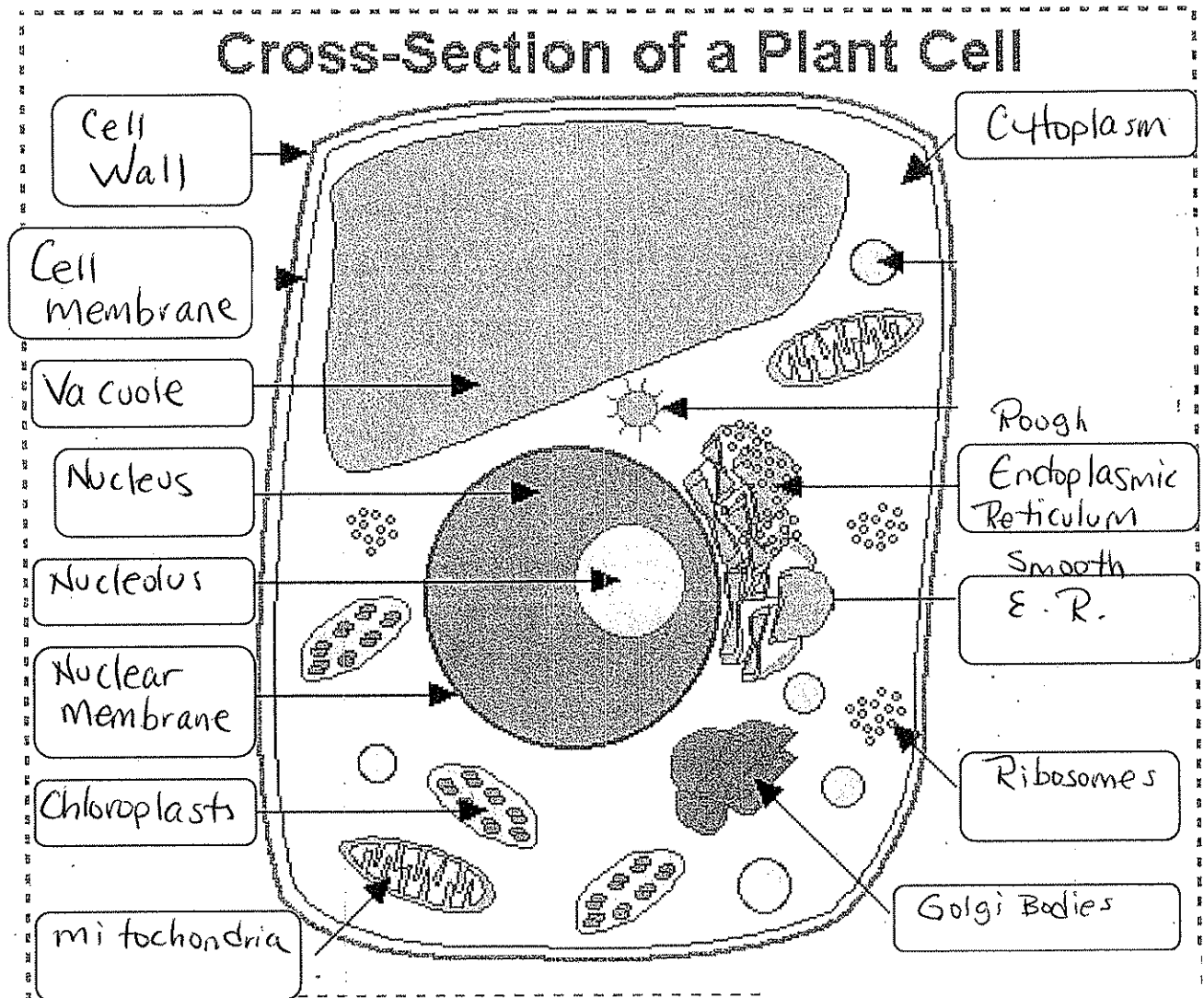


Name: \_\_\_\_\_ Date: \_\_\_\_\_

Life Science Notes 10  
Plant Cell Diagram

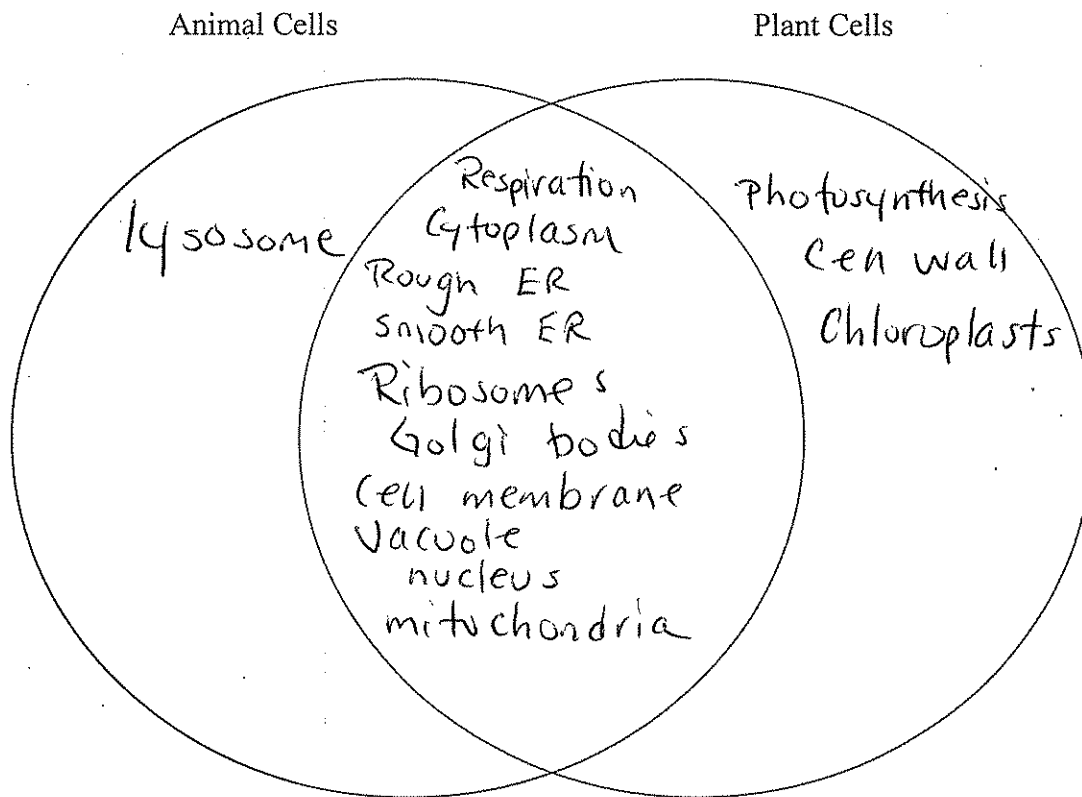


What is different between a plant cell and an animal cell?

1. The cell wall is a rigid structure that surrounds the cell membrane in plant cells only. Plants do not have a skeletal structure like many animals, so the cell wall helps to give the plant structure.
2. Chloroplasts are green-colored organelles that carry out a process

that animal cells do not. This process is called photosynthesis.

- photosynthesis is a process where plants harness the energy from the sun to create sugar
- In all cells, the sugar is then used by the mitochondria to create energy that the cell needs to do work. This process is called respiration and it happens in both animal and plant cells.



#### Venn Diagram

- In the diagram above, we will identify which organelles and cell processes are shared by both plant and animal cells.
- In the unshared region, we will identify organelles and processes unique to each cell.